

6FM150MV-X 12V 150Ah(10hr)

The rechargeable batteries are lead-lead dioxide systems. The dilute sulfuric acid electrolyte is absorbed by separators and plates and thus immobilized. Should the battery be accidentally overcharged producing hydrogen and oxygen, special one-way valves allow the gases to escape thus avoiding excessive pressure build-up. Otherwise, the battery is completely sealed and is, therefore, maintenance-free, leak proof and usable in any position.



Battery Construction

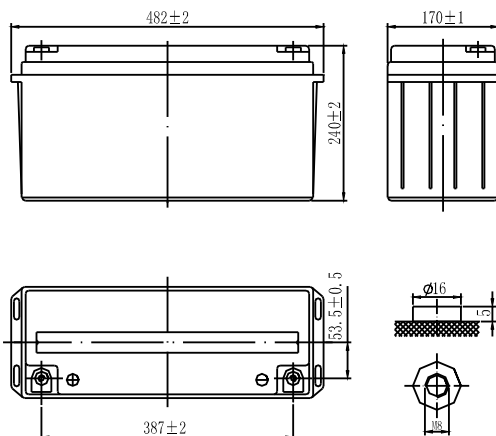
Component	Positive plate	Negative plate	Container	Cover	Safety valve	Terminal	Separator	Electrolyte
Raw material	Lead dioxide	Lead	ABS	ABS	Rubber	Copper	Fiberglass	Sulfuric acid

General Features

- Absorbent Glass Mat (AGM) technology for efficient gas recombination of up to 99% and freedom from electrolyte maintenance or water adding.
- Not restricted for air transport-complies with IATA/ICAO Special Provision A67.
- UL-recognized component.
- Can be mounted in any orientation.
- Computer designed lead, calcium tin alloy grid for high power density.
- Long service life, float or cyclic applications.
- Maintenance-free operation.
- Low self discharge.

Dimensions and Weight

Length(mm / inch)	482 / 19.0
Width(mm / inch)	170 / 6.69
Height(mm / inch)	240 / 9.45
Total Height(mm / inch)	240 / 9.45
Approx. Weight(Kg / lbs)	42.5/ 93.7



Performance Characteristics

Nominal Voltage	12V
Number of cell	6
Design Life	8 years
Nominal Capacity 77°F(25°C)	
10 hour rate (15.3A, 10.8V)	153Ah
5 hour rate (26.7A, 10.5V)	133.5Ah
1 hour rate (98.6A, 9.6V)	98.6Ah
Internal Resistance	
Fully Charged battery 77°F(25°C)	4mOhms
Self-Discharge	
3% of capacity declined per month at 20°C(average)	
Operating Temperature Range	
Discharge	-20~60°C
Charge	-10~60°C
Storage	-20~60°C
Max. Discharge Current 77°F(25°C)	1000A(5s)
Short Circuit Current	2800A
Charge Methods: Constant Voltage Charge 77°F(25°C)	
Cycle use	2.30-2.35VPC
Maximum charging current	45A
Temperature compensation	-30mV/°C
Standby use	2.23-2.27VPC
Temperature compensation	-20mV/°C

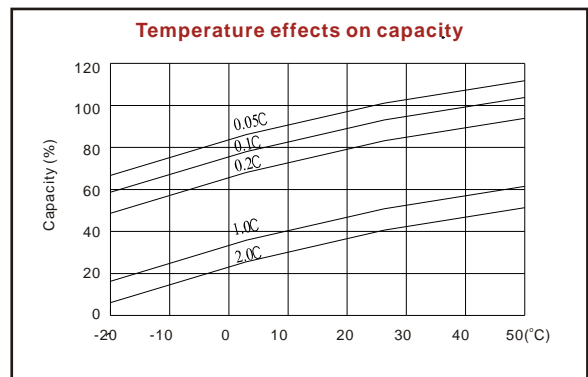
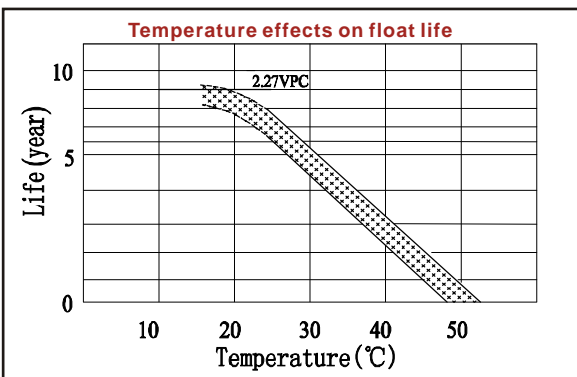
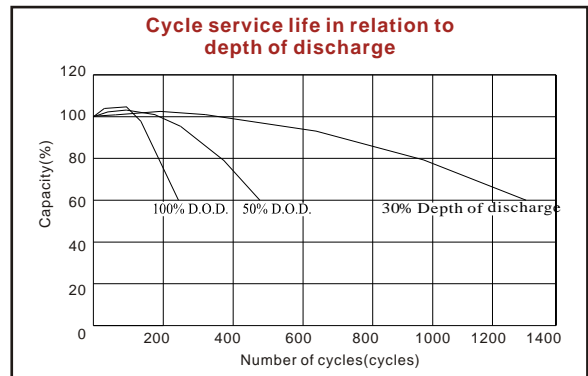
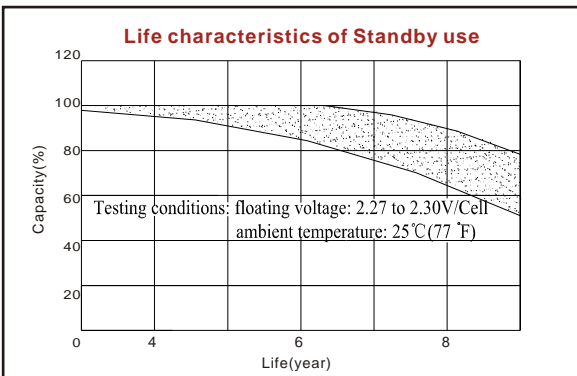
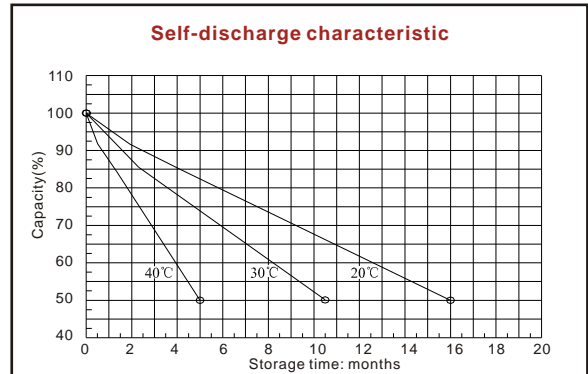
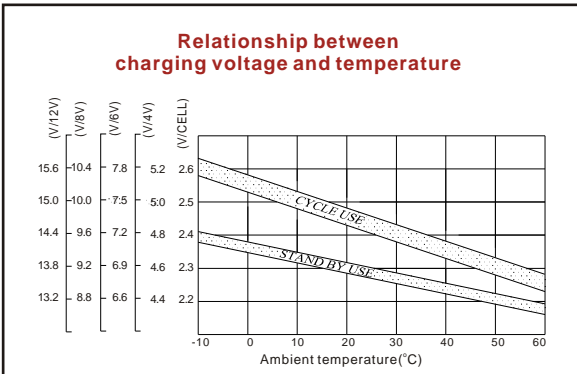
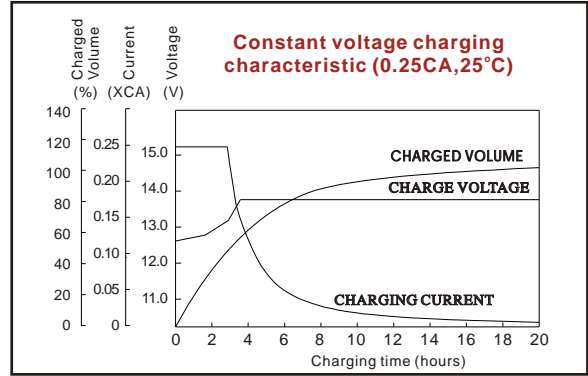
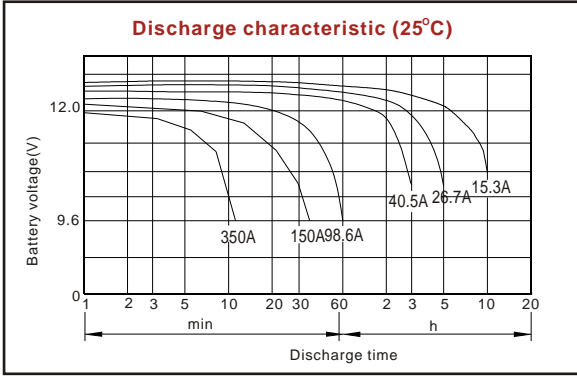
Discharge Constant Current (Amperes at 77°F25°C)

End point volts/cell	10min	15min	30min	45min	1h	3h	5h	10h
1.60V/cell	397.5	300.0	172.5	124.1	98.6	44.7	29.1	16.1
1.65V/cell	366.2	280.5	163.4	119.1	95.2	43.4	28.1	15.9
1.70V/cell	339.3	263.8	154.9	116.2	92.1	41.6	27.4	15.6
1.75V/cell	311.3	247.1	148.8	111.7	89.3	40.5	26.7	15.4
1.80V/cell	283.3	226.2	143.3	107.7	85.3	39.8	26.0	15.3

Discharge Constant Power (Watts at 77°F25°C)

End point volts/cell	10min	15min	30min	45min	1h	3h	5h	10h
1.60V/cell	675.7	524.9	314.5	230.3	185.3	85.4	56.1	31.6
1.65V/cell	636.9	499.1	300.0	222.1	179.9	83.3	54.4	31.3
1.70V/cell	595.6	473.0	286.7	218.7	175.3	80.2	53.1	30.7
1.75V/cell	559.1	449.3	277.0	211.1	170.5	78.2	51.9	30.4
1.80V/cell	517.1	416.4	269.0	205.3	163.7	77.1	50.8	30.2

(Note)The above characteristics data are average values obtained within three charge/discharge cycles not the minimum values.



ISO9001:2000

MH25860

G4M19906-9202-E-16

www.vision-batt.com

Address: VCPT – 5C Street – Nhon Trach II Industrial Zone, Nhon Trach, Dong Nai, Vietnam
 Tel: + 84-261 356 9936 / Fax: + 84-261 356 9938 E-mail: sales@vision-batt.com
 Website: http://www.vision-batt.com